

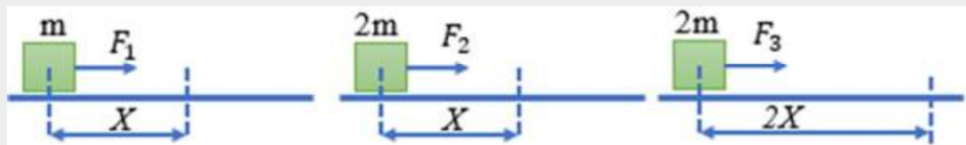
[SINOV TEST]

(Ikkinchi toifa toifa) - 1605267

Fan: Fizika

1	2	3	4	5	6	7	8	9	10	11	12	13	14	15	16	17	18	19	20
21	22	23	24	25	26	27	28	29	30	31	32	33	34	35	36	37	38	39	40

1. Rasmda tinch turgan va massalari m , $2m$, $4m$ bo'lgan jismlar doimiy F_1 , F_2 , F_3 kuchlar ta'sirida X , X va $2X$ masofalarni teng vaqtlar ichida bosib o'tdi. Shu ma'lumotlardan foydalanib, jismlarga ta'sir etgan kuchlarni taqqoslang. Ishqalanishni hisobga olmang.



☐ $F_1 < F_2 < F_3$

☐ $F_2 > F_3 > F_1$

☐ $F_3 > F_1 > F_2$

☐ $F_1 > F_2 > F_3$

Oldingi

Keyingi

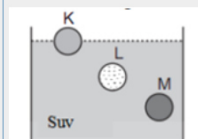
[SINOV TEST]

(Ikkinchi toifa toifa) - 1605267

Fan: Fizika

1	2	3	4	5	6	7	8	9	10	11	12	13	14	15	16	17	18	19	20	21	22	23	24	25	26	27	28	29
30	31	32	33	34	35	36	37	38	39	40																		

2. Teng hajmli K , L , M jismlar suvga tushirilganda rasmdagidek vaziyatni egallab, tinch turib qoldi. Bunga asosan quyidagi fikrlardan qaysilari to'g'ri?



I. K jismni zichligi M nikidan katta.

II. L va M jismlarga ta'sir qilayotgan Arxmed kuchlari teng.

III. L jismning massasi M nikidan katta.

IV. K jismning zichligi eng kichik.

☐ faqat II

☐ II va IV

☐ II va III

☐ I va IV

Oldingi

Keyingi

Барча фанлардан аттестация саволлари Ўқитувчилар ва ўқувчилар учун тестлар, мактаб дарсликлари ва қизиқарли мақолалар

«Таълим/Образование» саҳифалари:

Telegram - https://t.me/talim_obrazovaniye

Веб сайт - www.idum.uz

Youtube - https://www.youtube.com/c/talim_obrazovaniye

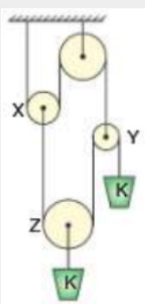
[SINOV TEST]

Fan: Fizika

(Ikkinchi toifa toifa) - 1605267

1	2	3	4	5	6	7	8	9	10	11	12	13	14	15	16	17	18	19	20	21	22	23	24	25	26	27	28	29
30	31	32	33	34	35	36	37	38	39	40																		

3. Muvozanatda turgan sistemadagi X blokning massasi 1,6 kg, Y blokning massasi 0,2 kg ga teng bo'lsa, Z blokning massasi qanchaga teng bo'ladi?



www.idum.uz

☐ 0,3 kg

☐ 0,2 kg

☐ 0,4 kg

☐ 0,5 kg

Oldingi

Keyingi

[SINOV TEST]

Fan: Fizika

(Ikkinchi toifa toifa) - 1605267

1	2	3	4	5	6	7	8	9	10	11	12	13	14	15	16	17	18	19	20	21	22	23	24	25	26	27	28	29
30	31	32	33	34	35	36	37	38	39	40																		

4. Sinf xonasining o'lchamlari $8 \times 12 \times 3 \text{ m}^3$ bo'lib, xonadagi absolyut namlik $1,25 \frac{\text{g}}{\text{m}^3}$ ga teng bo'lsa, xonadagi suv bug'i massasini aniqlang (g).

☐ 200

☐ 300

☐ 280

☐ 360

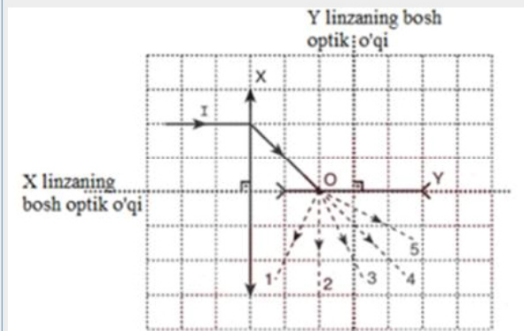
www.idum.uz

Oldingi

Keyingi

1	2	3	4	5	6	7	8	9	10	11	12	13	14	15	16	17	18	19	20	21	22	23	24	25	26	27	28	29
30	31	32	33	34	35	36	37	38	39	40																		

5. Fokus masofalari teng bo'lgan qavariq X linza va botiq Y linzalarning bosh optik o'qlari bir-biriga perpendikulyar joylashgan. X linzaning bosh optik o'qiga parallel tushuvchi / yorug'lik nuri bu linzadan rasmda ko'rsatilganidek singan bo'lsa, bu nur Y linzadan o'tganda qaysi yo'nalish bo'ylab ketadi?



- ☐ 4-yo'nalish
☐ 2-yo'nalish
☐ 3-yo'nalish
☐ 1-yo'nalish

www.idum.uz

Oldingi

Keyingi

1	2	3	4	5	6	7	8	9	10	11	12	13	14	15	16	17	18	19	20	21	22	23	24	25	26	27	28	29
30	31	32	33	34	35	36	37	38	39	40																		

6. Optik zichligi 1,7 ga teng bo'lgan shaffof moddadan tayyorlangan linzaning havodagi fokus masofasi F_1 , suvdagi fokus masofasi F_2 va anilindagi fokus masofasi F_3 ga teng. Bu linzaning uch holatdagi fokus masofalari orasidagi to'g'ri munosabatni ko'rsating. Suv va anilinning optik zichliklari mos ravishda 1,3 hamda 1,59 ga teng.

- ☐ $F_2 < F_1 < F_3$
☐ $F_1 < F_2 < F_3$
☐ $F_1 > F_2 > F_3$
☐ $F_1 = F_2 = F_3$

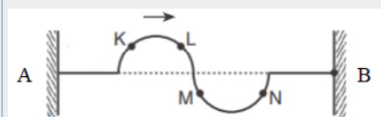
www.idum.uz

Oldingi

Keyingi

1	2	3	4	5	6	7	8	9	10	11	12	13	14	15	16	17	18	19	20	21	22	23	24	25	26	27	28	29
30	31	32	33	34	35	36	37	38	39	40																		

7. A va B devorlar orasidagi tarang tortilgan arqonda to'liq biror onda strelka yo'nalishida harakatlanmoqda. Shu onda K, L, M, N nuqtalardan qaysilari yuqoriga tomon harakatlanmoqda?



- ☐ K va M
☐ M va N
☐ L va M
☐ K va L

www.idum.uz

Oldingi

Keyingi

1	2	3	4	5	6	7	8	9	10	11	12	13	14	15	16	17	18	19	20	21	22	23	24	25	26	27	28	29
30	31	32	33	34	35	36	37	38	39	40																		

8. Harorati 50° bo'lgan 2 l suv harorati 5° bo'lgan ichi bo'sh idishga solindi. Biroz vaqt o'tgandan keyin bu idishdagi suv harorati 30° ga teng bo'lib qolgan bo'lsa, shu idishning issiqlik sig'imini toping (J/kg). (Issiqlik tashqariga chiqib ketmagan deb oling). Suvning solishtirma issiqlik sig'imi $4200 \frac{J}{kg \cdot K}$

☐ 2298☐ 5680☐ 6720☐ 4200

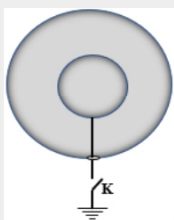
www.idum.uz

Oldingi

Keyingi

1	2	3	4	5	6	7	8	9	10	11	12	13	14	15	16	17	18	19	20	21	22	23	24	25	26	27	28	29
30	31	32	33	34	35	36	37	38	39	40																		

9. Biri ikkinchisining ichiga kiritilgan metall sferalarning radiuslari mos ravishda $R_1 = 20 \text{ cm}$, $R_2 = 25 \text{ cm}$, zaryadlari esa $q_1 = 8 \text{ nC}$, $q_2 = 15 \text{ nC}$ ga teng. Agar kalit ulansa, tashqi sferaning zaryadi qanday o'zgaradi? Sim tashqi sferadan izolyatsiya qilingan.

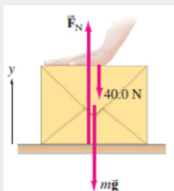
☐ kamayadi☐ o'zgarmaydi☐ qiymati o'zgarmasdan ishorasi o'zgaradi☐ ortadi

www.idum.uz

Oldingi

Keyingi

10. Rasmdagi F_N kuchning qiymati 170 N ga teng bo'lsa, jism massasini toping?

☐ 17 kg☐ 13 kg☐ 10 kg☐ 20kg

www.idum.uz

Oldingi

Keyingi

1	2	3	4	5	6	7	8	9	10	11	12	13	14	15	16	17	18	19	20	21	22	23	24	25	26	27	28	29
30	31	32	33	34	35	36	37	38	39	40																		

11. O'zgaruvchan tok zanjiriga ulangan kondensatordagi zaryadning o'zgarish qonuni $q = 2 \cdot 10^{-6} \cos 10\pi t$ ko'rinishida bo'lsa, tok kuchining eng katta qiymati qancha (A)?

☐ $2 \cdot 10^{-7}$ ☐ $2\pi \cdot 10^{-7}$ ☐ $2\pi \cdot 10^{-6}$ ☐ $2\pi \cdot 10^{-5}$

www.idum.uz

Oldingi

Keyingi

[SINOV TEST]**(Ikkinchi toifa toifa) - 1605267****Fan: Fizika**

1	2	3	4	5	6	7	8	9	10	11	12	13	14	15	16	17	18	19	20	21	22	23	24	25	26	27	28	29
30	31	32	33	34	35	36	37	38	39	40																		

12. **Temperatura ko'tarilganda suyuqliklarning sirt taranglik koeffitsienti qanday o'zgaradi?**

- ☐ kamayadi
- ☐ suyuqlik turiga bog'liq ravishda ortishi ham, kamayishi ham mumkin.
- ☐ ortadi
- ☐ o'zgarmaydi

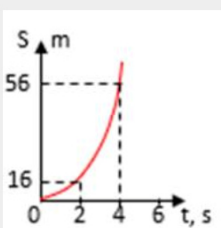
www.idum.uz

Oldingi

Keyingi

[SINOV TEST]**(Ikkinchi toifa toifa) - 1605267****Fan: Fizika**

1	2	3	4	5	6	7	8	9	10	11	12	13	14	15	16	17	18	19	20	21	22	23	24	25	26	27	28	29
30	31	32	33	34	35	36	37	38	39	40																		

13. **Grafikdan foydalanib jismning $t = 3$ s da bosib o'tgan yo'lini toping.**

- ☐ 29
- ☐ 24
- ☐ 33
- ☐ 42

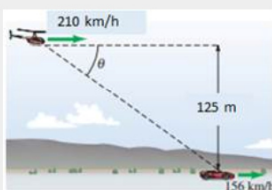
www.idum.uz

Oldingi

Keyingi

[SINOV TEST]**(Ikkinchi toifa toifa) - 1605267****Fan: Fizika**

1	2	3	4	5	6	7	8	9	10	11	12	13	14	15	16	17	18	19	20	21	22	23	24	25	26	27	28	29
30	31	32	33	34	35	36	37	38	39	40																		

14. **Yerdan 125 m balandlikda gorizontal yo'nalishda 210 km/soat tezlik bilan uchayotgan vertolyot, katta yo'lda 156 km/soat tezlik bilan harakatlanayotgan avtomobilga yukni yetkazishi lozim. Vertolyot yukni mashinadan qanday masofada tashlaganda, yuk to'g'ri mashinaga tushadi? Havoning qarshiligini hisobga olmang.**

- ☐ 75
- ☐ 95
- ☐ 68
- ☐ 105

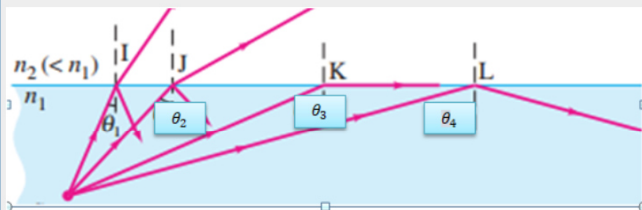
www.idum.uz

Oldingi

Keyingi

1	2	3	4	5	6	7	8	9	10	11	12	13	14	15	16	17	18	19	20	21	22	23	24	25	26	27	28	29	
30	31	32	33	34	35	36	37	38	39	40																			

15. Rasmdagi qaysi burchak to'la ichki qaytishning chegaraviy burchagi hisoblanadi?

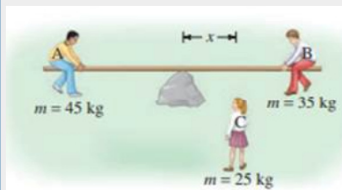

☐ θ_2
☐ θ_1
☐ θ_3
☐ θ_4
www.idum.uz

Oldingi

Keyingi

1	2	3	4	5	6	7	8	9	10	11	12	13	14	15	16	17	18	19	20	21	22	23	24	25	26	27	28	29	
30	31	32	33	34	35	36	37	38	39	40																			

16. Sistema muvozanatda bo'lishi uchun C qizcha tayanchdan qanday x masofada o'tirishi kerak? A va B bolalar tayanchdan 5 m uzoqlikda o'tiribdi.


☐ 2

☐ 3

☐ 2,5

☐ 3,6

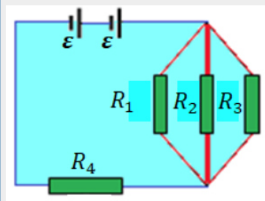
www.idum.uz

Oldingi

Keyingi

1	2	3	4	5	6	7	8	9	10	11	12	13	14	15	16	17	18	19	20	21	22	23	24	25	26	27	28	29	
30	31	32	33	34	35	36	37	38	39	40																			

17. Elektr zanjiridagi EYuK lar $\varepsilon=100\text{ V}$ dan bo'lib, qarshiliklar $R_1=R_3=40\ \Omega$, $R_2=80\ \Omega$ va $R_4=34\ \Omega$ ga teng. R_2 qarshilikdan o'tayotgan tok kuchini (A) va shu qarshilikdagi kuchlanishni (V) aniqlang.


☐ 2; 23

☐ 0,44; 32

☐ 0,8; 64

☐ 4; 40

www.idum.uz

Oldingi

Keyingi

[SINOV TEST]

(Ikkinchi toifa toifa) - 1605267

Fan: Fizika

1	2	3	4	5	6	7	8	9	10	11	12	13	14	15	16	17	18	19	20	21	22	23	24	25	26	27	28	29	
30	31	32	33	34	35	36	37	38	39	40																			

18. Matematik mayatnik ipining uzunligi 2 marta ortsa, uning tebranish davri qanday o'zgaradi?

☐ 2 marta ortadi☐ $\sqrt{2}$ marta kamayadi☐ 2 marta kamayadi☐ $\sqrt{2}$ marta ortadi

www.idum.uz

Oldingi

Keyingi

[SINOV TEST]

(Ikkinchi toifa toifa) - 1605267

Fan: Fizika

1	2	3	4	5	6	7	8	9	10	11	12	13	14	15	16	17	18	19	20	21	22	23	24	25	26	27	28	29	
30	31	32	33	34	35	36	37	38	39	40																			

19. Yerning qaysi nuqtasida kompasning shimoliy qutbi yerga tik yo'nalgan bo'ladi?

☐ shimoliy kenglikda☐ magnit qutbda☐ magnit ekvatorida☐ janubiy kenglikda

www.idum.uz

Oldingi

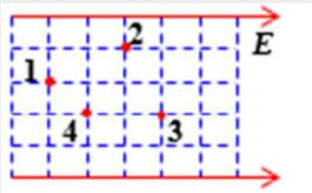
Keyingi

[SINOV TEST]

(Ikkinchi toifa toifa) - 1605267

Fan: Fizika

1	2	3	4	5	6	7	8	9	10	11	12	13	14	15	16	17	18	19	20	21	22	23	24	25	26	27	28	29
30	31	32	33	34	35	36	37	38	39	40																		

20. Rasmda keltirilgan nuqtalar orasida maydon potentsiallari farqi ($\Delta\varphi$) uchun qanday munosabat o'rinni? E - elektr maydon kuchlanganligi. Katakchalar bir xil kvadratlardan tashkil topgan.☐ $\Delta\varphi_{23} = \Delta\varphi_{14} = 2\Delta\varphi_{12} = 2\Delta\varphi_{34}$ ☐ $\Delta\varphi_{12} = \Delta\varphi_{23} = \Delta\varphi_{43} = \Delta\varphi_{14}$ ☐ $\Delta\varphi_{12} = \Delta\varphi_{43} = 2\Delta\varphi_{23} = 2\Delta\varphi_{14}$ ☐ $\Delta\varphi_{21} = \Delta\varphi_{13} = \Delta\varphi_{34}$

www.idum.uz

Oldingi

Keyingi

[SINOV TEST]

(Ikkinchi toifa toifa) - 1605267

Fan: Fizika

1	2	3	4	5	6	7	8	9	10	11	12	13	14	15	16	17	18	19	20	21	22	23	24	25	26	27	28	29	
30	31	32	33	34	35	36	37	38	39	40																			

21. Bir jinsli magnit maydonda harakatlanayotgan protonga qachon magnit maydon ta'sir qilmaydi?

☐ magnit maydonga parallel yo'nalishda uchib kirganda☐ magnit maydonga perpendikulyar yo'nalishda uchib kirganda☐ hamma vaqt ta'sir qiladi☐ bir jinsli magnit maydon protonga umuman ta'sir qilmaydi

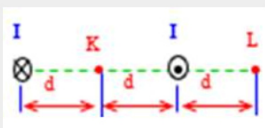
www.idum.uz

Oldingi

Keyingi

1	2	3	4	5	6	7	8	9	10	11	12	13	14	15	16	17	18	19	20	21	22	23	24	25	26	27	28	29
30	31	32	33	34	35	36	37	38	39	40																		

22. Rasmda parallel toklarning K nuqtadagi magnit maydon induksiyasi $4B$ ga teng bo'lsa, L nuqtadagi magnit maydon induksiyasi nimaga teng?



$$\frac{4B}{3}$$

☐

$$\frac{5B}{3}$$

☐

$$\frac{8B}{3}$$

☐
☐ B

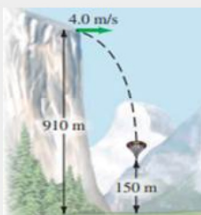
www.idum.uz

Oldingi

Keyingi

1	2	3	4	5	6	7	8	9	10	11	12	13	14	15	16	17	18	19	20	21	22	23	24	25	26	27	28	29
30	31	32	33	34	35	36	37	38	39	40																		

23. 1 kg massali jism, rasmda ko'rsatilganidek, $H=910$ m balandlikdan gorizontol 4 m/s boshlang'ich tezlik bilan otilgan. Yerdan 150 m balandlikda jism qanday kinetik energiyaga (kJ) ega bo'ladi?


☐ 22,5

☐ 34,9

☐ 92,1

☐ 15,2

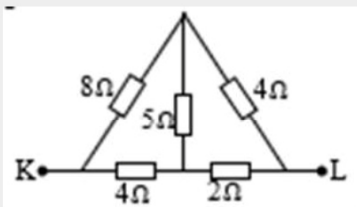
www.idum.uz

Oldingi

Keyingi

1	2	3	4	5	6	7	8	9	10	11	12	13	14	15	16	17	18	19	20	21	22	23	24	25	26	27	28	29
30	31	32	33	34	35	36	37	38	39	40																		

24. Keltirilgan elektr zanjiridan foydalanib, K va L nuqtalar orasidagi umumiy qarshilik necha Ω bo'lishini aniqlang.


☐ 23

☐ 9

☐ 4

☐ 18

www.idum.uz

Oldingi

Keyingi

[SINOV TEST]**(Ikkinchi toifa toifa) - 1605267****Fan: Fizika**

1	2	3	4	5	6	7	8	9	10	11	12	13	14	15	16	17	18	19	20	21	22	23	24	25	26	27	28	29
30	31	32	33	34	35	36	37	38	39	40																		

25. Doimiy magnit qizdirilsa, magnit xossalari qanday o'zgaradi?

- ☐ kamayadi
- ☐ ortishi ham kamayishi ham mumkin
- ☐ ortadi
- ☐ o'zgarmaydi

www.idum.uz

Oldingi

Keyingi

[SINOV TEST]**(Ikkinchi toifa toifa) - 1605267****Fan: Fizika**

1	2	3	4	5	6	7	8	9	10	11	12	13	14	15	16	17	18	19	20	21	22	23	24	25	26	27	28	29
30	31	32	33	34	35	36	37	38	39	40																		

26. Asosining yuzasi 500 cm² ga teng bo'lgan silindr shaklidagi po'kak suvda suzib yuribdi. Uni yana 8 cm chuqurtikka botirish uchun ustiga qancha massali (g) yuk qo'yish kerak? Po'kak zichligi 0,2 g/cm³ ga teng.

- ☐ 4000
- ☐ 1000
- ☐ 1500
- ☐ 2000

www.idum.uz

Oldingi

Keyingi

[SINOV TEST]**(Ikkinchi toifa toifa) - 1605267****Fan: Fizika**

1	2	3	4	5	6	7	8	9	10	11	12	13	14	15	16	17	18	19	20	21	22	23	24	25	26	27	28	29
30	31	32	33	34	35	36	37	38	39	40																		

27. 88 gramm karbonat angidrid (CO_2) gazida nechta kislorod atomi bor? Karbonat angidridning molyar massasi 44 $\frac{g}{mol}$ ga teng. N_A - Avogadro doimiysi.

- ☐ N_A
- ☐ $6N_A$
- ☐ $0,5N_A$
- ☐ $4N_A$

www.idum.uz

Oldingi

Keyingi

[SINOV TEST]**(Ikkinchi toifa toifa) - 1605267****Fan: Fizika**

1	2	3	4	5	6	7	8	9	10	11	12	13	14	15	16	17	18	19	20	21	22	23	24	25	26	27	28	29
30	31	32	33	34	35	36	37	38	39	40																		

28. Gorizontal otilgan jismning normal tezlanishi qaysi nuqtada eng katta bo'ladi?

- ☐ trayektorianing barcha nuqtasida bir xil
- ☐ yerga tushgan onda
- ☐ otilgan balandlikning o'rtasiga kelganda
- ☐ otilgan nuqtasida

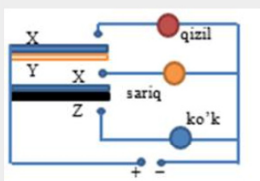
www.idum.uz

Oldingi

Keyingi

1	2	3	4	5	6	7	8	9	10	11	12	13	14	15	16	17	18	19	20	21	22	23	24	25	26	27	28	29	30	31	32	33	34	35
36	37	38	39	40																														

29. Rasmda keltirilgan elektr zanjirida foydalanilayotgan X , Y , Z metal juftliklarining chiziqli kengayish koeffitsientlari orasida $\alpha_Y > \alpha_X > \alpha_Z$ munosabat o'rinli. Bunga asosan, quyidagi tasdiqlardan qaysilari to'g'ri bo'lishi mumkin?



I. Sistema turgan muhit isitilsa, qizil va ko'k rangli lampalar yonadi

II. Sistema turgan muhit isitilsa, faqat sariq rangli lampa yonadi

III. Sistema turgan muhit sovitilsa, faqat sariq rangli lampa yonadi

☐ faqat I

☐ faqat III

☐ I va III

☐ faqat II

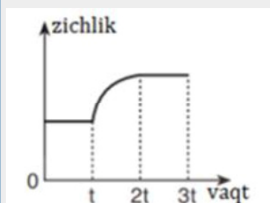
www.idum.uz

Oldingi

Keyingi

1	2	3	4	5	6	7	8	9	10	11	12	13	14	15	16	17	18	19	20	21	22	23	24	25	26	27	28	29
30	31	32	33	34	35	36	37	38	39	40																		

30. Bo'sh idish $0 - t$ vaqt oralig'ida K jo'mrak bilan, $t - 2t$ vaqt oralig'ida L jo'mrak bilan, $2t - 3t$ vaqt oralig'ida M jo'mrak bilan to'ldirilmoqda. Bu vaqt davomida idishda hosil bo'lgan aralashmaning zichlik-vaqt grafigi rasmda ko'rsatilgandek bo'ldi. Bunga asosan K , L va M jo'mraklardan oqayotgan suyuqliklarning zichliklari orasidagi munosabatni toping. (Jo'mraklar bir xil bo'lib, ulardan suyuqliklar bir xil tezlik bilan oqadi.)



☐ $\rho_L < \rho_M > \rho_K$

☐ $\rho_L > \rho_M > \rho_K$

☐ $\rho_L > \rho_M < \rho_K$

☐ $\rho_L < \rho_M < \rho_K$

www.idum.uz

Oldingi

Keyingi

1	2	3	4	5	6	7	8	9	10	11	12	13	14	15	16	17	18	19	20	21	22	23	24	25	26	27	28	29	
30	31	32	33	34	35	36	37	38	39	40																			

31. Qanday nur linzadan o'tganda sinmaydi?

☐ linzaning fokal tekisligidan o'tib linzaga kelgan nur

☐ qizil rangli nur

☐ linzaning fokus nuqtadan o'tib linzaga kelgan nur

☐ linzaning optik markaziga tushgan nur

www.idum.uz

Oldingi

Keyingi

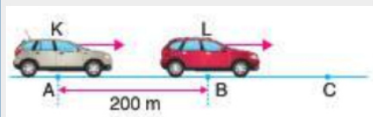
1	2	3	4	5	6	7	8	9	10	11	12	13	14	15	16	17	18	19	20	21	22	23	24	25	26	27	28	29
30	31	32	33	34	35	36	37	38	39	40																		

32. Rasmdagi mashinalar A va B nuqtalarda tinch turibdi. Bu mashinalar bir vaqtda $4 \frac{m}{s^2}$ va $3 \frac{m}{s^2}$ tezlanishlar bilan tekis tezlanuvchan harakatlana boshlab, C nuqtada uchrashishdi. Bunga ko'ra, quyidagi tasdiqlardan qaysilari to'g'ri?

I. BC masofa 600 m ga teng

II. K mashina C nuqtaga 20 s da boradi

III. L mashinaning C nuqtadagi tezligi $80 \frac{m}{s}$ ga teng bo'lgan



☐ hammasi

☐ I va III

☐ I va II

☐ II va III

www.idum.uz

Oldingi

Keyingi

1	2	3	4	5	6	7	8	9	10	11	12	13	14	15	16	17	18	19	20	21	22	23	24	25	26	27	28	29
30	31	32	33	34	35	36	37	38	39	40																		

33. Berilgan ideal gaz $TV^3 = \text{const}$ qonunga bo'ysunadi. Agar shu gazning hajmi 2 marta kamaysa, uning bosimi qanday o'zgaradi?

☐ 8 marta ortadi

☐ 8 marta kamayadi

☐ 16 marta kamayadi

☐ 16 marta ortadi

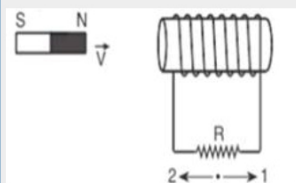
www.idum.uz

Oldingi

Keyingi

1	2	3	4	5	6	7	8	9	10	11	12	13	14	15	16	17	18	19	20	21	22	23	24	25	26	27	28	29
30	31	32	33	34	35	36	37	38	39	40																		

34. Rasmdagi doimiy magnit bo'lagi solenoidga o'zgarmas v tezlik bilan yaqinlashmoqda. Bunga asosan, quyidagi tasdiqlardan qaysi biri noto'g'ri?



☐ R qarshilik orttirilsa, induksion elektr yurituvchi kuchning qiymati kamayadi

☐ R qarshilik orttirilsa, induksion tok kuchi kamayadi

☐ Rezistordan 1 yo'nalishda induksion tok oqadi

☐ Solenoidning o'ramlari soni orttirilsa, induksion tok kuchi ortadi

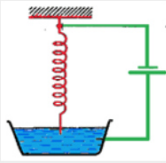
www.idum.uz

Oldingi

Keyingi

1	2	3	4	5	6	7	8	9	10	11	12	13	14	15	16	17	18	19	20	21	22	23	24	25	26	27	28	29	
30	31	32	33	34	35	36	37	38	39	40																			

35. Prujina vertikal holda mahkamlangan bo'lib, uning pastki uchi idishdagi suyuq o'tkazgichga tegib turadi. Eektr zanjiridagi prujinaning keyingi holatini tasvirlab bering.



- ☐ Prujina qiziydi
- ☐ Hech qanday hodisa ro'y bermaydi
- ☐ Prujina tebranma harakatlana boshlaydi
- ☐ Qisqa tutashuv bo'lib, tok mabai ishdan chiqadi

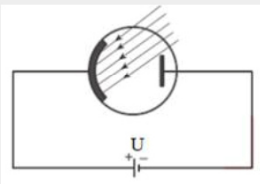
www.idum.uz

Oldingi

Keyingi

1	2	3	4	5	6	7	8	9	10	11	12	13	14	15	16	17	18	19	20	21	22	23	24	25	26	27	28	29
30	31	32	33	34	35	36	37	38	39	40																		

36. Fotoelementli zanjirning katodi chastotasi γ , fotonlar soni N bo'lgan yorug'lik dastasi bilan yoritilganida zanjirdan fototok oqmadi (rasmga q). Manbaning kuchlanishi U ga teng bo'lsa, γ , N va U lardan qaysilari oshirilganda, zanjirdan fototok oqishi mumkin?



- ☐ N va γ
- ☐ faqat N
- ☐ faqat γ
- ☐ faqat U

www.idum.uz

Oldingi

Keyingi

1	2	3	4	5	6	7	8	9	10	11	12	13	14	15	16	17	18	19	20	21	22	23	24	25	26	27	28	29
30	31	32	33	34	35	36	37	38	39	40																		

37. Rasmdagi jismlar uchun keltirilgan xulosalardan qaysilari to'g'ri?

- I. K jismning zichligi L jismnikidan katta
- II. X jismning massasi Y jismnikidan katta
- III. X jismning zichligi Y jismnikidan katta
- IV. K jismning zichligi L jismnikiga teng

www.idum.uz

- ☐ I va II
- ☐ faqat II
- ☐ II va IV
- ☐ II va III

Oldingi

Keyingi

1	2	3	4	5	6	7	8	9	10	11	12	13	14	15	16	17	18	19	20	21	22	23	24	25	26	27	28	29
30	31	32	33	34	35	36	37	38	39	40																		

38. Quyoshning gorizontdan balandligi 46° ni tashkil etadi. Yassi ko'zgudan qaytgan quyosh nurlari yuqoriga vertikal ravishda yo'nalishi uchun uning ko'zguga tushish burchagi qanday bo'lishi kerak?

☐ 22° ☐ 28° ☐ 26° ☐ 60°

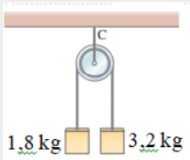
www.idum.uz

Oldingi

Keyingi

1	2	3	4	5	6	7	8	9	10	11	12	13	14	15	16	17	18	19	20	21	22	23	24	25	26	27	28	29	
30	31	32	33	34	35	36	37	38	39	40																			

39. Rasmdagi sistemaning tezlanishini ($\frac{m}{s^2}$) toping. Blok ishqalanishsiz aylanadi. $g = 10 \frac{m}{s^2}$

☐ 2,8☐ 2,1☐ 1,6☐ 1,2

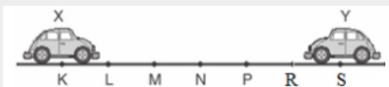
www.idum.uz

Oldingi

Keyingi

1	2	3	4	5	6	7	8	9	10	11	12	13	14	15	16	17	18	19	20	21	22	23	24	25	26	27	28	29	
30	31	32	33	34	35	36	37	38	39	40																			

40. Rasmda teng bo'lakli yo'lning bir qismi ko'rsatilgan. Harakati K va S nuqtalar orasida o'rganilayotgan X hamda Y mashinalar bir vaqtda tekis harakat qilib, M nuqtada uchrashadi. Bu ma'lumotlardan foydalanib, Y mashina tezligi X mashina tezligidan necha marta katta ekanligini toping.

☐ 1,5 marta☐ 4 marta☐ 2 marta☐ 3 marta

www.idum.uz

Oldingi

Keyingi